

FOLKLANDS

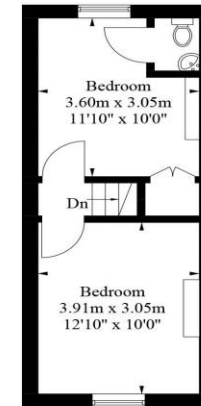
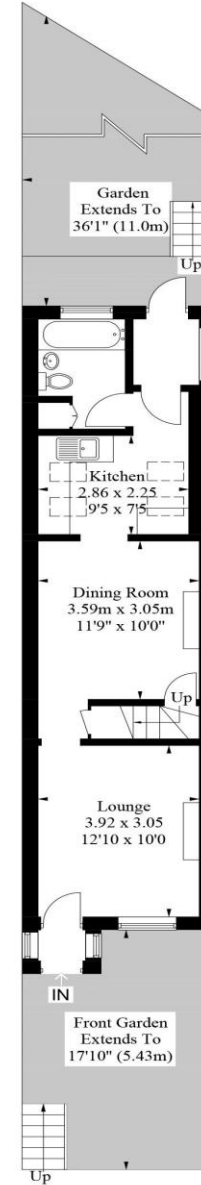
PURLEY VIEW TERRACE, SOUTH CROYDON
GUIDE PRICE £340,000





South Croydon

Approximate Gross Internal Area = 67.9 sq m / 731 sq ft

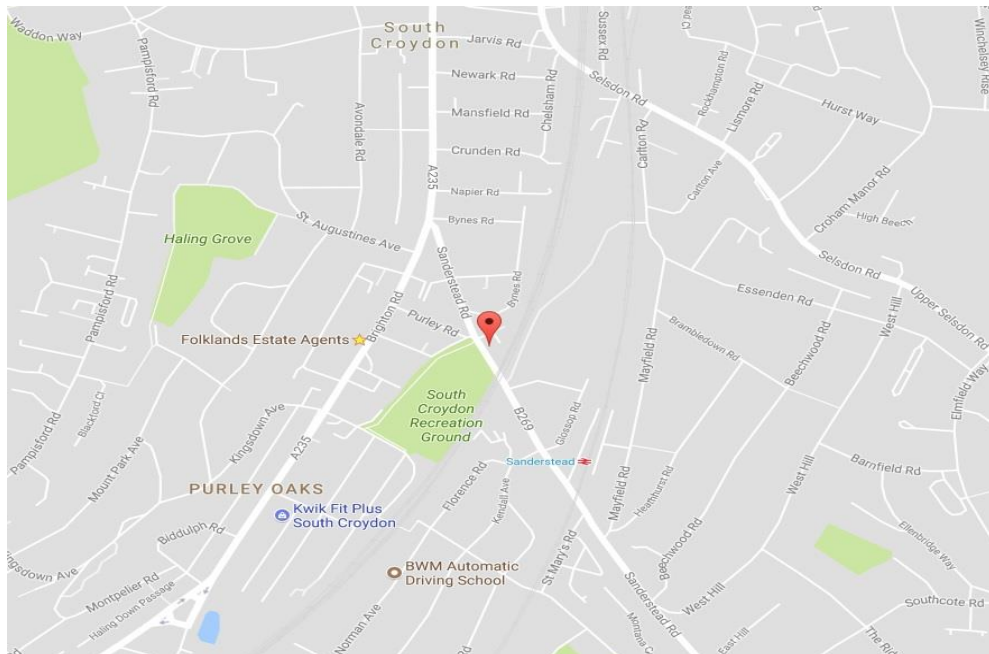


Ground Floor
41.9 sq m / 451 sq ft

First Floor
26.0 sq m / 280 sq ft

Illustration for identification purposes only, measurements are approximate, not to scale. FloorplansUsketch.com © 2017 (ID366289)

- ❖ EPC EER D
- ❖ TERRACED HOUSE
- ❖ 0.2 MILES FROM SANDERSTEAD TRAIN STATION
- ❖ 0.3 MILES FROM PURLEY OAKS TRAIN STATION
- ❖ MOMENTS FROM LOCAL CONVENIENCES
- ❖ OPPOSITE OPEN PARK LAND
- ❖ TWO DOUBLE BEDROOMS
- ❖ WELL PRESENTED
- ❖ MOMENTS FROM PURLEY OAKS PRIMARY SCHOOL
- ❖ PRIVATE REAR GARDEN



A well presented two double bedroom mid terrace house situated within this highly desirable part of South Croydon, conveniently located only 0.2 miles from Sanderstead train station which provides a direct service to London Victoria and 0.3 miles from Purley Oaks train station which offers a direct service to London Bridge.

This bright & airy home enjoys open views over Purley Oaks recreational grounds, and benefits from two full width double bedrooms, an additional first floor WC, a low maintenance rear garden, and with ample living space we feel this property would make an ideal first time buy.

The accommodation comprises master bedroom with built in cupboard & separate WC, second double bedroom, living room, separate dining room, fitted kitchen, modern bathroom suite, and a paved rear garden ideal for entertaining.

Furthermore, this property sits moments from a wide range of shops, cafes, restaurants and local conveniences, and is approximately 0.2 miles from Purley Oaks primary school.

